



À R O S

— 2 & 3 BHK LAVISH HOMES —

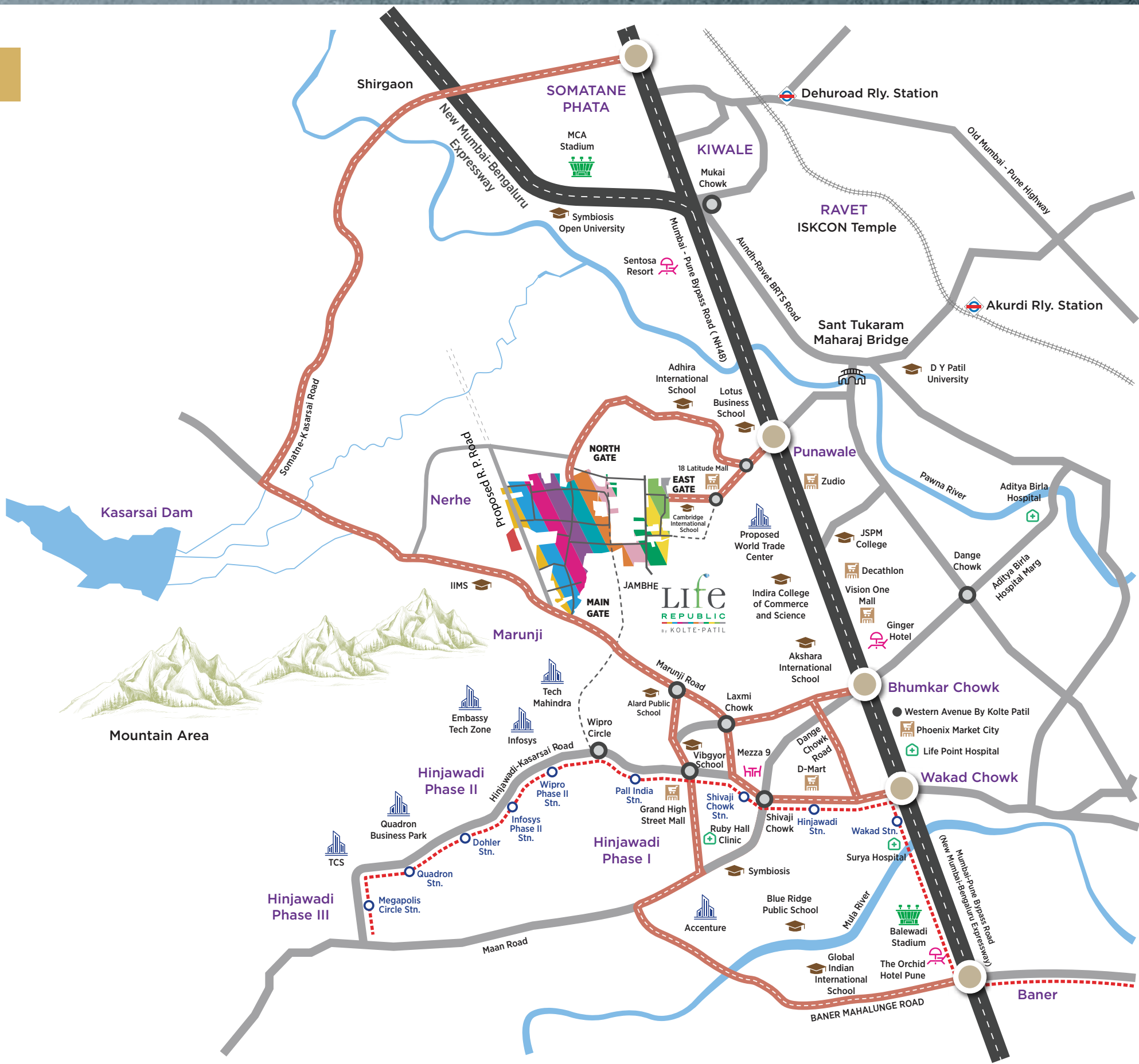
#ThePrivilegedLife



# Location Map

## LEGEND

- Expressway
- Main Roads
- Main Roads Leading to Life Republic
- Metro
- Railway
- Rivers
- Bridge
- Chowk
- Railway Station
- Junctions Connecting Life Republic
- Future Roads





# Location Highlights

## SCHOOLS

- Crimson Anisha Global School
- Indira International school
- Akshara International School
- Vibgyor School
- Mahindra International School

## COLLEGES

- NICMAR
- DY Patil
- Indira Institute of Management
- JSPM
- Alard College
- IIMS

## HOSPITAL

- Apollo Clinic
- Aditya Birla Hospital
- Surya Mother and Child Super speciality Hopsital
- Life Point
- Sahyadri Hospital

## SHOPPING MALL

- Elpro City Square mall
- Grand High street Mall
- Xion Mall Hinjewadi
- Vision One
- Phoenix Market city (Upcoming)

## RETAIL & HIGH STREET

- D-Mart
- Smart bazar
- Decathlon
- Balewadi high street
- Croma

## ENTERTAINMENT

- PVR
- Carnival Cinemas
- INOX
- Butterfly Trampoline Park
- Dinosaur Garden

## IT PARK

- TCS
- Wipro
- Infosys
- Embassy Tech Zone
- Quadron Business Park



Enter the  
world of  
privileges

INTRODUCING

  
À R O S

Artistic Image

In everyday life, only a few rise above and seek the extraordinary. Something beyond the readily available that oozes exclusivity. At Aros, this finds form in different ways - be it the dynamic Club Aros, mesmerizing Nature's Nest or the stunning Sky Trail. This is the World of Privileges!



Morning View



Actual Image



Sunset View



Actual Image



Club Aros ~19,000 sq.ft.



Artistic Image



## MULTIPURPOSE HALL



Artistic Image



## INDOOR GAMES



Artistic Image



GYM



Artistic Image



Nature's Nest ~2.6 Acres



Artistic Image

Landscape Designed by





An artistic rendering of the Carnival Lawn at the Carnival Tower in Chicago. The image shows a large, circular green lawn with a central square paved area. To the left, there are tiered concrete seating steps. The lawn is surrounded by a paved walkway with several small, modern light poles. In the background, the tall, modern Carnival Tower with its distinctive orange and grey facade rises against a sunset sky. The foreground is filled with vibrant pink and purple flowers. The overall scene is a lush, modern urban park space.

An artistic rendering of the Carnival Lawn at the Carnival Tower in Chicago. The image shows a large, circular green lawn with a central square paved area. To the left, there are tiered concrete seating steps. The lawn is surrounded by a paved walkway with several small, modern light poles. In the background, the tall, modern Carnival Tower rises, featuring a mix of orange and grey facade panels and many windows. The sky is a soft mix of blue and orange, suggesting dusk or dawn. The foreground is filled with vibrant pink and purple flowers. The overall atmosphere is modern and inviting.



~500M EDPM Jogging Track



Artistic Image



Sports Arena



Artistic Image



Sky Trail at ~70m Height



Artistic Image



~200m Long Sky Trail at Terrace Level



Artistic Image



## Star Gazing Point



Artistic Image



## Master Layout



Map not to scale



# LEGEND

## CLUB AROS EXTERIOR AMENITIES

1. Entrance Plaza
2. Walk-in Shower
3. Kid's Pool
4. Care Taker's Pavillion
5. Swimming Pool
6. Jacuzzi
7. Pool Deck
8. Cabana
9. Regal Lawns
10. Bonfire
11. Tree Plaza
12. Bbq Counter
13. Pathway
14. Kid's Play Area
15. Seating Plaza
16. Pet's Park

## SKY TRAIL

1. Sky Bridge
2. Star Gazing Point
3. Sundeck
4. Activity Lawn
5. Yoga Lawn
6. Swing Plaza
7. Outdoor Games Tables
8. Service Counter

## NATURE'S NEST

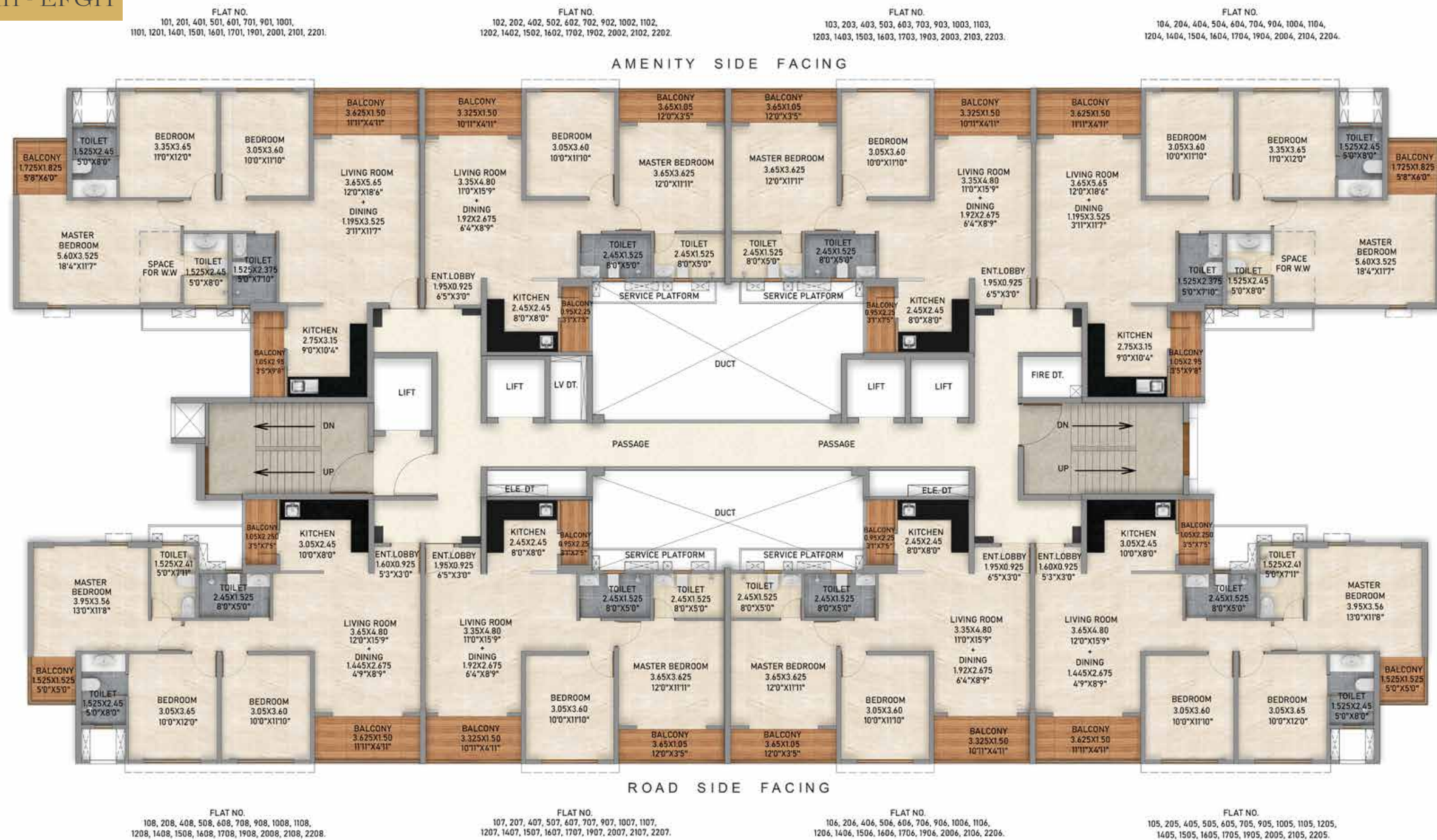
1. Access To Podium Amenities
2. Nature's Crossroads
3. ~500 Meters Epdm Jogging Track
4. Futsal Court
5. 2 Touch Tennis Courts
6. Basketball Court
7. Skating Rink
8. Ecofitness Zone
9. Pathway
10. Golden Ager's Gazebo
11. Reflexology Path
12. Herb Garden
13. Tree Plazo
14. Vibe Arena
15. Flora Park
16. Tiny Tycoons - Sand Pit
17. Kid's Play Arena
18. Kid's Adventure Park
19. Carnival Lawn
20. Lawn
21. Amphitheatre
22. Seating Nooks
23. Picnic Area
24. Patio Seating
25. Geek Pods
26. Aroma Garden
27. Creative Arena
28. Performing Arts Platform
29. Buddha Cove



# Floor Plans



Typical Floor Plan - EFGH



BUILDING - EFGH					
Type	Flat Numbers	Flat Carpet Area (Sq.M.)	Flat Carpet Area (Sq.Ft.)	Balcony (Sq.M.)	Balcony (Sq.Ft.)
2 BHK Elite	102, 202, 402, 502, 602, 702, 902, 1002, 1102, 1202, 1402, 1502, 1602, 1702, 1902, 2002, 2102, 2202, 103, 203, 403, 503, 603, 703, 903, 1003, 1103, 1203, 1403, 1503, 1603, 1703, 1903, 2003, 2103, 2203, 106, 206, 406, 506, 606, 706, 906, 1006, 1106, 1206, 1406, 1506, 1606, 1706, 1906, 2006, 2106, 2206, 107, 207, 407, 507, 607, 707, 907, 1007, 1107, 1207, 1407, 1507, 1607, 1707, 1907, 2007, 2107, 2207	66.73	718.28	10.96	117.97
3 BHK Regal	105, 205, 405, 505, 605, 705, 905, 1005, 1105, 1205, 1405, 1505, 1605, 1705, 1905, 2005, 2105, 2205, 108, 208, 408, 508, 608, 708, 908, 1008, 1108, 1208, 1408, 1508, 1608, 1708, 1908, 2008, 2108, 2208	88.32	950.68	10.12	108.93
3 BHK Imperial	101, 201, 401, 501, 601, 701, 901, 1001, 1101, 1201, 1401, 1501, 1601, 1701, 1901, 2001, 2101, 2201, 104, 204, 404, 504, 604, 704, 904, 1004, 1104, 1204, 1404, 1504, 1604, 1704, 1904, 2004, 2104, 2204	97.57	1050.24	11.68	125.72

Notes:

- All Dimensions Are In Meter Unless Otherwise Specified.
- Dimensions & Areas Additionally Mentioned In Feet Inches & Square Feet Are Only For Customer's Understanding. Kindly Do Not Refer The Same For Any ReRA Related References.





## 3<sup>rd</sup> Floor Plan - E



BUILDING - E						
Type	Flat Numbers	Flat Carpet Area (Sq.M.)	Flat Carpet Area (Sq.Ft.)	Balcony (Sq.M.)	Balcony (Sq.Ft.)	Terrace (Sq.Ft.)
2 BHK Elite	306, 307	66.73	718.28	10.96	117.97	
3 BHK Regal	305, 308	88.32	950.68	10.12	108.93	
3 BHK Imperial Garden	301	97.57	1050.24	11.68	125.72	32.98
3 BHK Imperial	304	97.57	1050.24	11.68	125.72	
3 RLK	303	85.48	920.11	14.79	159.20	

### Notes:

- All Dimensions Are In Meter Unless Otherwise Specified.
- Dimensions & Areas Additionally Mentioned In Feet Inches & Square Feet Are Only For Customer's Understanding. Kindly Do Not Refer The Same For Any ReRA Related References.





## 3<sup>rd</sup> Floor Plan - F



BUILDING F							
Type	Flat Numbers	Flat Carpet Area (Sq.M.)	Flat Carpet Area (Sq.Ft.)	Balcony (Sq.M.)	Balcony (Sq.Ft.)	Terrace (Sq.M.)	Terrace (Sq.Ft.)
2 BHK Elite	306, 307	66.73	718.28	10.96	117.97		
3 BHK Regal	305, 308	88.32	950.68	10.12	108.93		
3 BHK Imperial Garden	301	97.57	1050.24	11.68	125.72	32.98	355.00
3 BHK Imperial	304	97.57	1050.24	11.68	125.72		
3 RLK	303	85.48	920.11	14.79	159.20		

### Notes:

1. All Dimensions Are In Meter Unless Otherwise Specified.
2. Dimensions & Areas Additionally Mentioned In Feet Inches & Square Feet Are Only For Customer's Understanding. Kindly Do Not Refer The Same For Any ReRA Related References.





## 3<sup>rd</sup> Floor Plan - G & H



**BUILDING G & H**

Type	Flat Numbers	Flat Carpet Area (Sq.M.)	Flat Carpet Area (Sq.Ft.)	Balcony (Sq.M.)	Balcony (Sq.Ft.)	Terrace (Sq.M.)	Terrace (Sq.Ft.)
2 BHK Elite	306, 307	66.73	718.28	10.96	117.97		
3 BHK Regal	305, 308	88.32	950.68	10.12	108.93		
3 BHK Imperial Garden	304	97.57	1050.24	11.68	125.72	32.98	355.00
3 BHK Imperial	301	97.57	1050.24	11.68	125.72		
3 RLK	302	85.48	920.11	14.79	159.20		

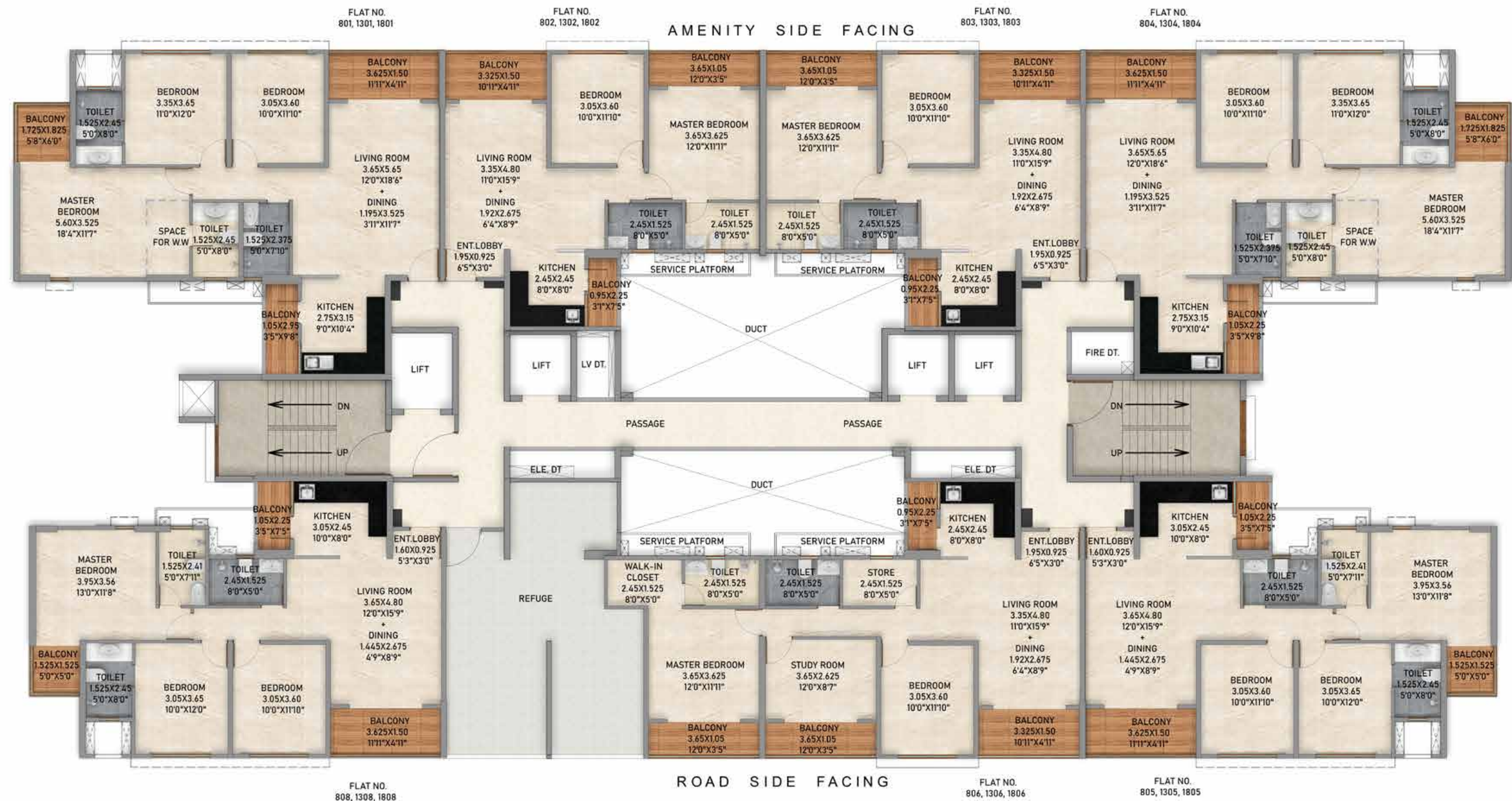
**Notes:**

1. All Dimensions Are In Meter Unless Otherwise Specified.
2. Dimensions & Areas Additionally Mentioned In Feet Inches & Square Feet Are Only For Customer's Understanding. Kindly Do Not Refer The Same For Any ReRA Related References.





## Refuge Floor Plan - E, G & H



BUILDING E, G & H					
Type	Flat Numbers	Flat Carpet Area (Sq.M.)	Flat Carpet Area (Sq.Ft.)	Balcony (Sq.M.)	Balcony (Sq.Ft.)
2 BHK Elite	802, 1302, 1802. 803, 1303, 1803	66.73	718.28	10.96	117.97
3 BHK Regal	805, 1305, 1805. 808, 1308, 1808	88.32	950.68	10.12	108.93
3 BHK Imperial	801, 1301, 1801. 804, 1304, 1804	97.57	1050.24	11.68	125.72
3 RLK	806, 1306, 1806	89.48	963.16	14.79	159.20

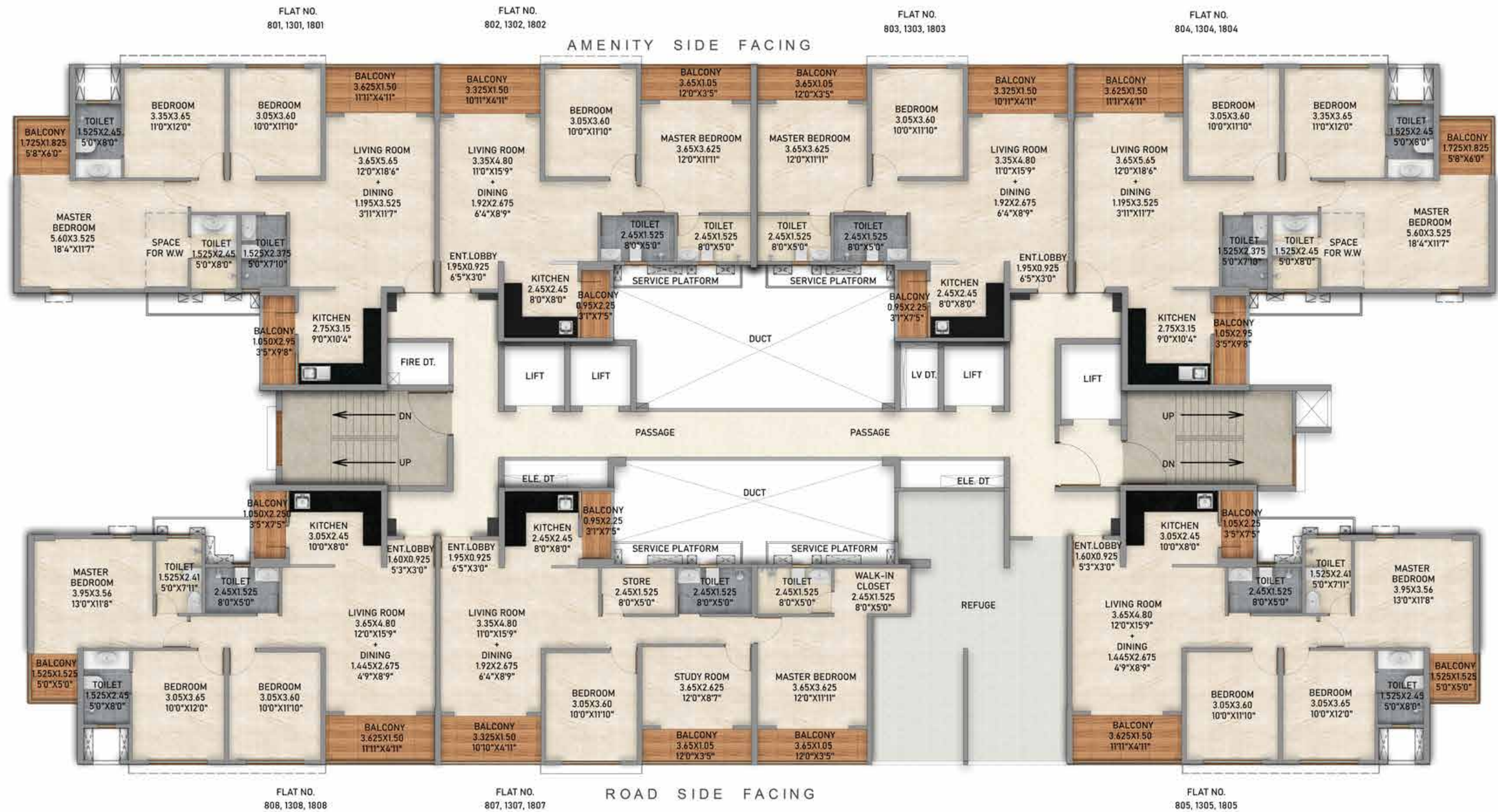
### Notes:

1. All Dimensions Are In Meter Unless Otherwise Specified.
2. Dimensions & Areas Additionally Mentioned In Feet Inches & Square Feet Are Only For Customer's Understanding. Kindly Do Not Refer The Same For Any ReRA Related References.





## Refuge Floor Plan - F



BUILDING - F					
Type	Flat Numbers	Flat Carpet Area (Sq.M.)	Flat Carpet Area (Sq.Ft.)	Balcony (Sq.M.)	Balcony (Sq.Ft.)
2 BHK Elite	802, 1302, 1802, 803, 1303, 1803	66.73	718.28	10.96	117.97
3 BHK Regal	805, 1305, 1805, 808, 1308, 1808	88.32	950.68	10.12	108.93
3 BHK Imperial	801, 1301, 1801, 804, 1304, 1804	97.57	1050.24	11.68	125.72
3 RLK	807, 1307, 1807	89.48	963.16	14.79	159.20

### Notes:

- All Dimensions Are In Meter Unless Otherwise Specified.
- Dimensions & Areas Additionally Mentioned In Feet Inches & Square Feet Are Only For Customer's Understanding. Kindly Do Not Refer The Same For Any ReRA Related References.

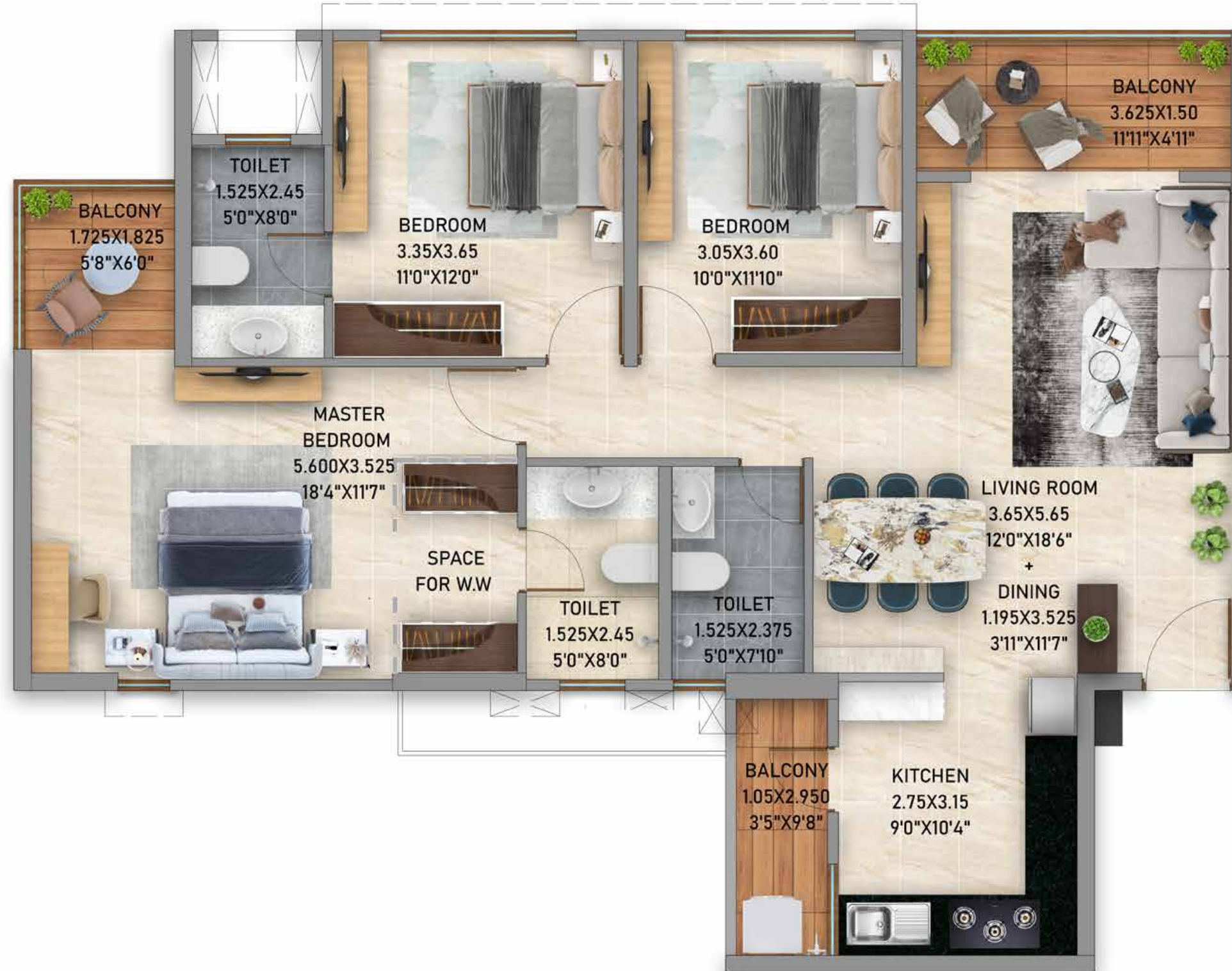




# Unit Plans



## 3 BHK Imperial



Type	Flat Carpet Area ( Sq.m.)	Flat Carpet Area ( Sq.ft.)	Balcony ( Sq.m.)	Balcony ( Sq.Ft.)
3 BHK Imperial	97.57	1050.24	11.68	125.72

### Notes:

1. All Dimensions Are In Meter Unless Otherwise Specified.
2. Dimensions & Areas Additionally Mentioned In Feet Inches & Square Feet Are Only For Customer's Understanding. Kindly Do Not Refer The Same For Any ReRA Related References.



## 3 BHK Regal



Type	Flat Carpet Area ( Sq.m.)	Flat Carpet Area ( Sq.ft.)	Balcony ( Sq.m.)	Balcony ( Sq.Ft.)
3 BHK Regal	88.32	950.68	10.12	108.93

### Notes:

1. All Dimensions Are In Meter Unless Otherwise Specified.
2. Dimensions & Areas Additionally Mentioned In Feet Inches & Square Feet Are Only For Customer's Understanding. Kindly Do Not Refer The Same For Any ReRA Related References.



## 2 BHK Elite



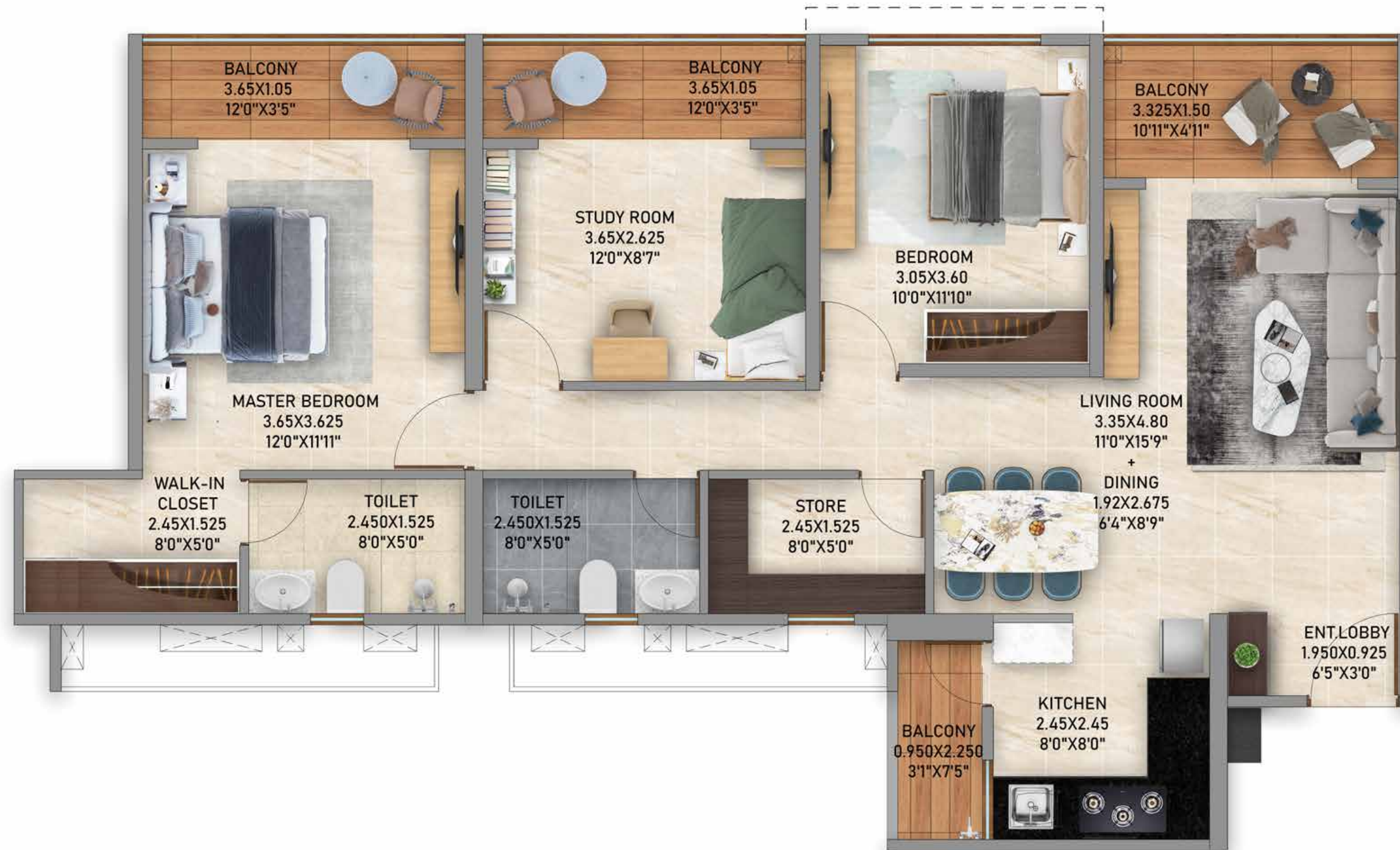
Type	Flat Carpet Area ( Sq.m.)	Flat Carpet Area ( Sq.ft.)	Balcony ( Sq.m.)	Balcony ( Sq.Ft.)
2 BHK Elite	66.73	718.28	10.96	117.97

### Notes:

1. All Dimensions Are In Meter Unless Otherwise Specified.
2. Dimensions & Areas Additionally Mentioned In Feet Inches & Square Feet Are Only For Customer's Understanding. Kindly Do Not Refer The Same For Any ReRA Related References.



## 3 RLK



Type	Flat Carpet Area ( Sq.m.)	Flat Carpet Area ( Sq.ft.)	Balcony ( Sq.m.)	Balcony ( Sq.Ft.)
3 RLK	89.48	963.16	14.79	159.20

### Notes:

1. All Dimensions Are In Meter Unless Otherwise Specified.
2. Dimensions & Areas Additionally Mentioned In Feet Inches & Square Feet Are Only For Customer's Understanding. Kindly Do Not Refer The Same For Any ReRA Related References.



# Internal Specifications

## HOME AUTOMATION

- Mobile application controllable touch switches & compatible voice assistance device
- Light, fan & fan speed control in living, dining & master bedroom of all apartments
- Digital lock for main door

## FLOORING & TILING

- 600x1200mm Marble finish vitrified flooring tiles in all rooms
- Ceramic wooden finish flooring tiles in balcony

## KITCHEN

- L Shape Granite Platform
- SS Sink with drain board in 3BHK Imperial
- 600x1200mm designer Ceramic Dado tile 2ft above platform

## WASHROOM

- Jaquar or equivalent wall-mounted CP fittings
- Jaquar or equivalent sanitary fittings
- Counter Top Wash Basin with Vitrified platform
- Full counter top washbasin with vitrified platform in 3BHK bed washrooms
- 600x600mm Antiskid flooring in all washrooms
- 600x1200mm designer Ceramic dado tiles up to lintel

## DOORS & WINDOWS

- SS + toughened Glass safety Railing in Balconies
- Heat reflective glass/tinted glass windows and balcony doors with mosquito net
- Central opening balcony doors
- Designer engineered wood main door

## PROVISIONS

- Provision of electrical points and sleeves for AC
- Gas Pipeline
- FTTH (Fiber to the home)
- Exhaust provision for Kitchen & Washrooms
- Provision for water purifier

## ELECTRIC

- Schneider or equivalent modular switches in entire apartment
- Polycab or equivalent concealed electric wire

## SECURITY SYSTEM

- Standalone Video Door Phone
- 24 X 7 security

## OTHERS

- Counter platform at main door for delivery



# Interior Renders



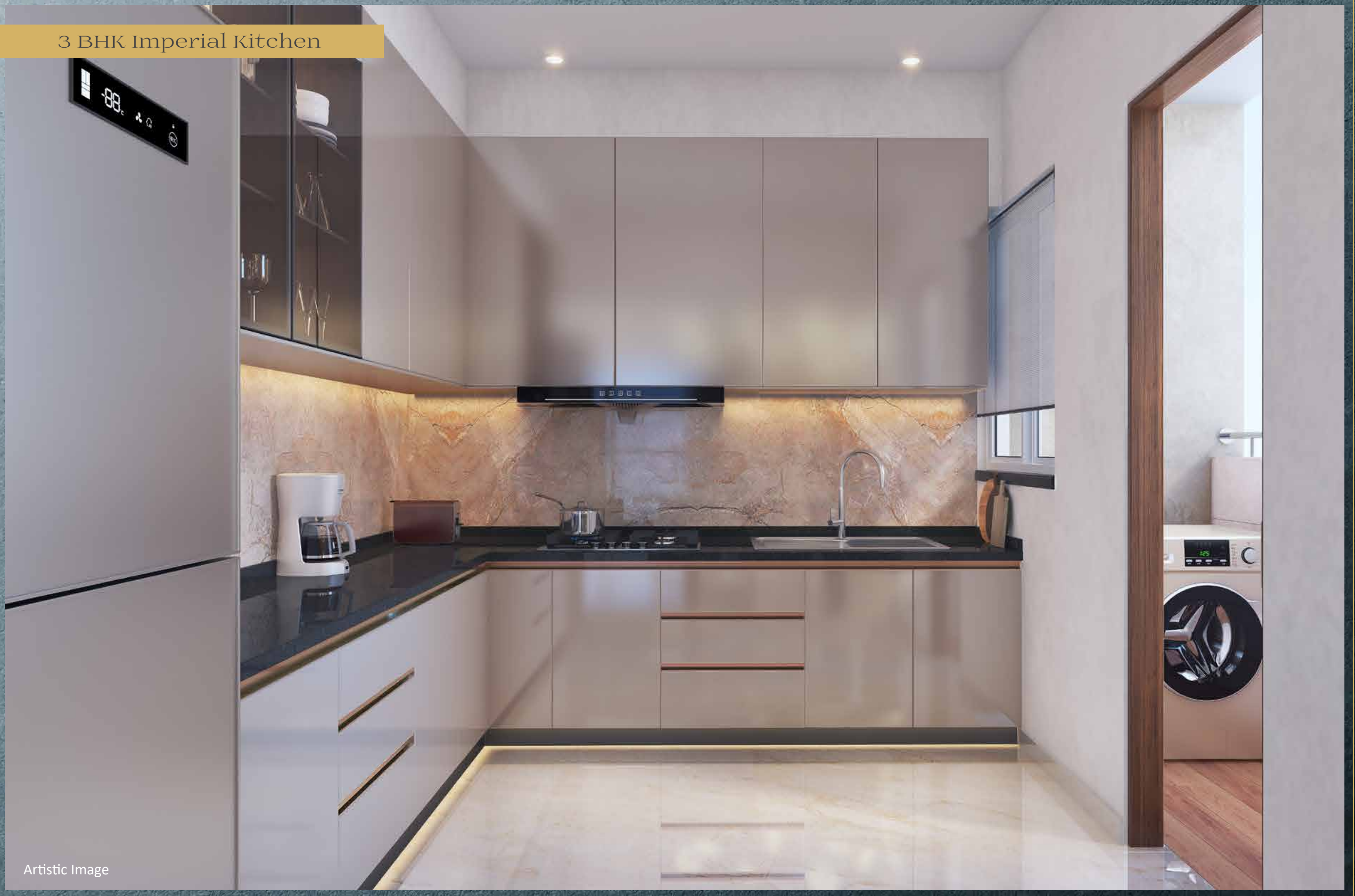
### 3 BHK Imperial Living Room



Artistic Image



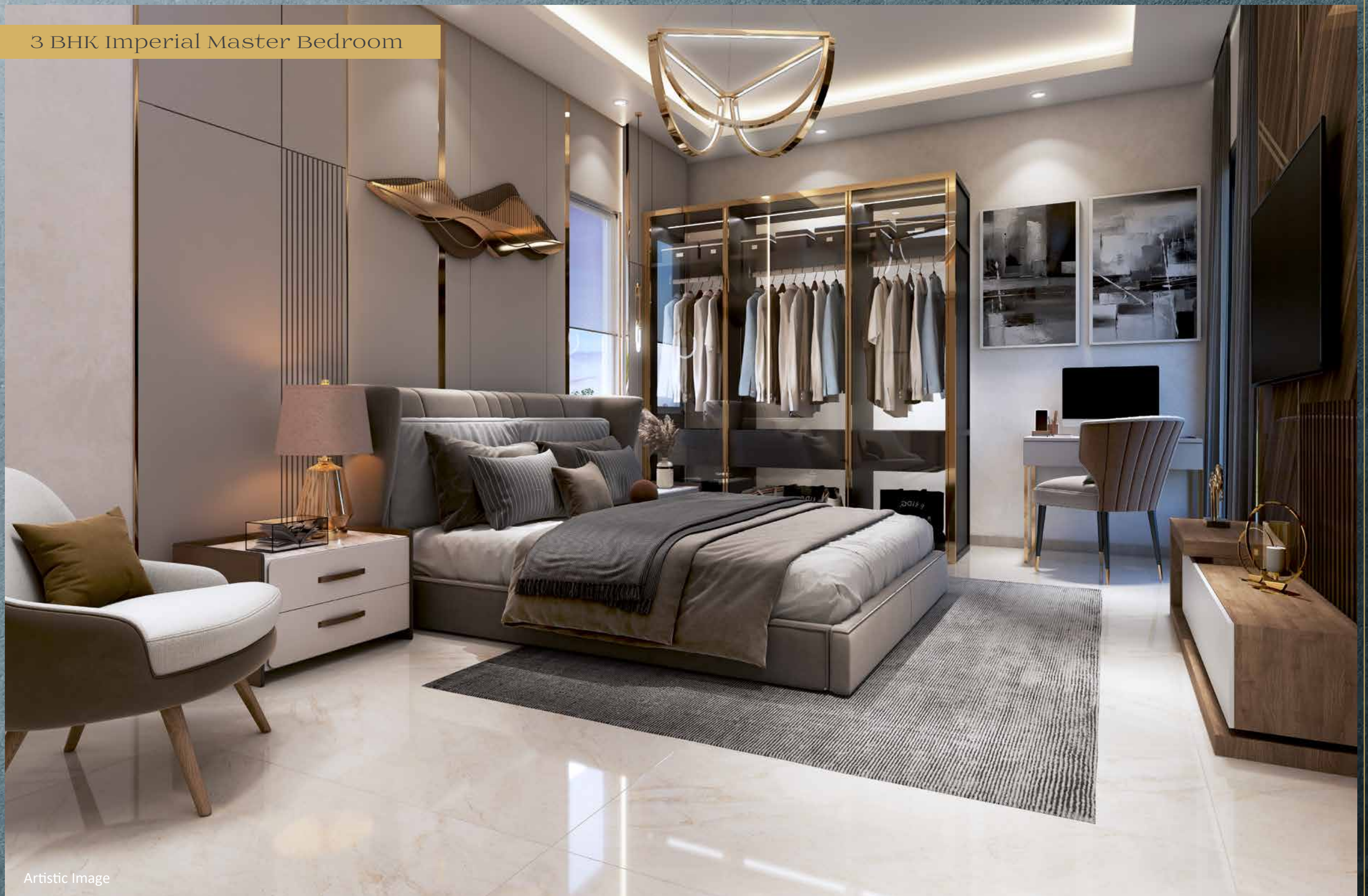
### 3 BHK Imperial Kitchen



Artistic Image



### 3 BHK Imperial Master Bedroom

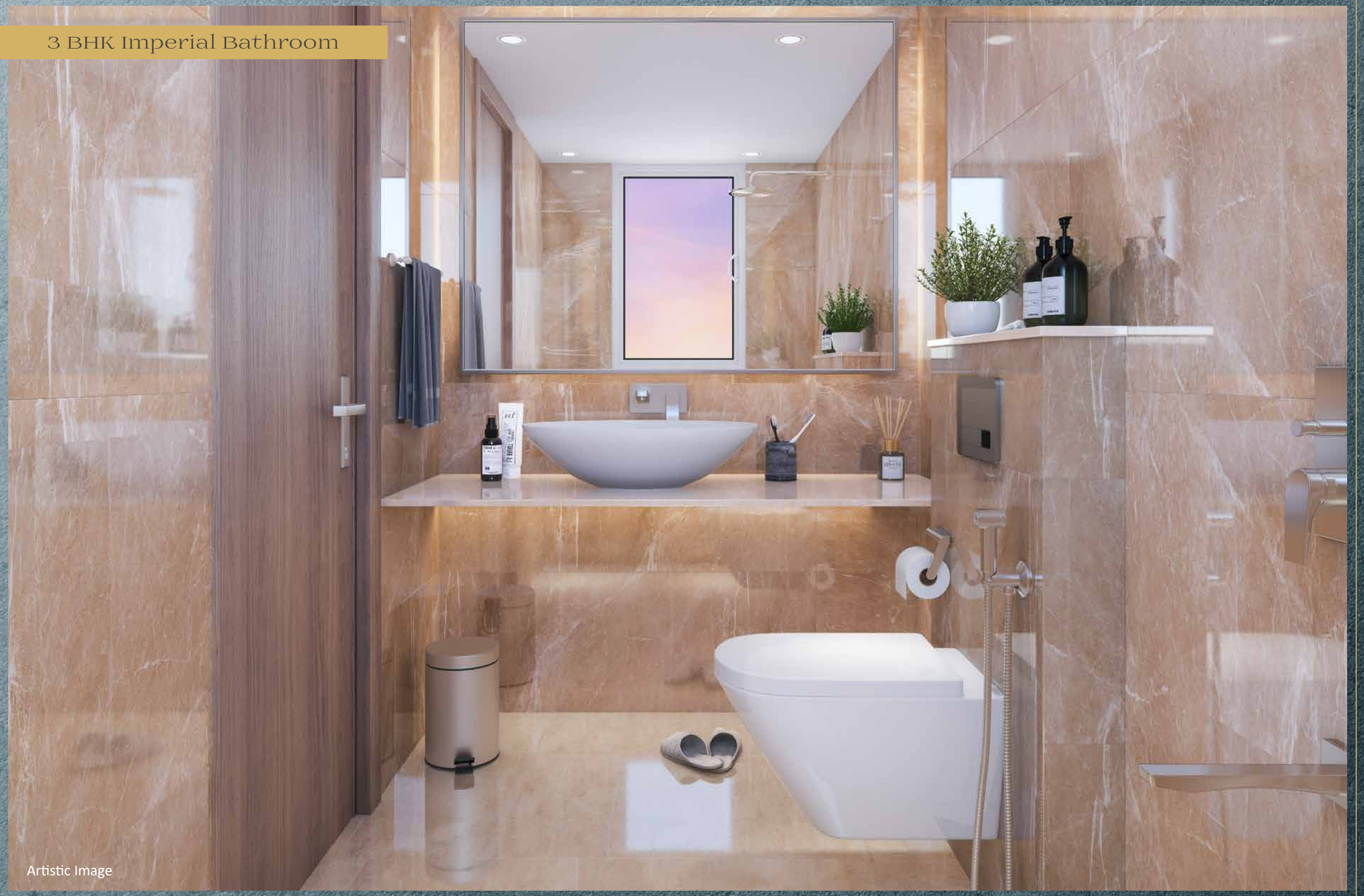


Artistic Image



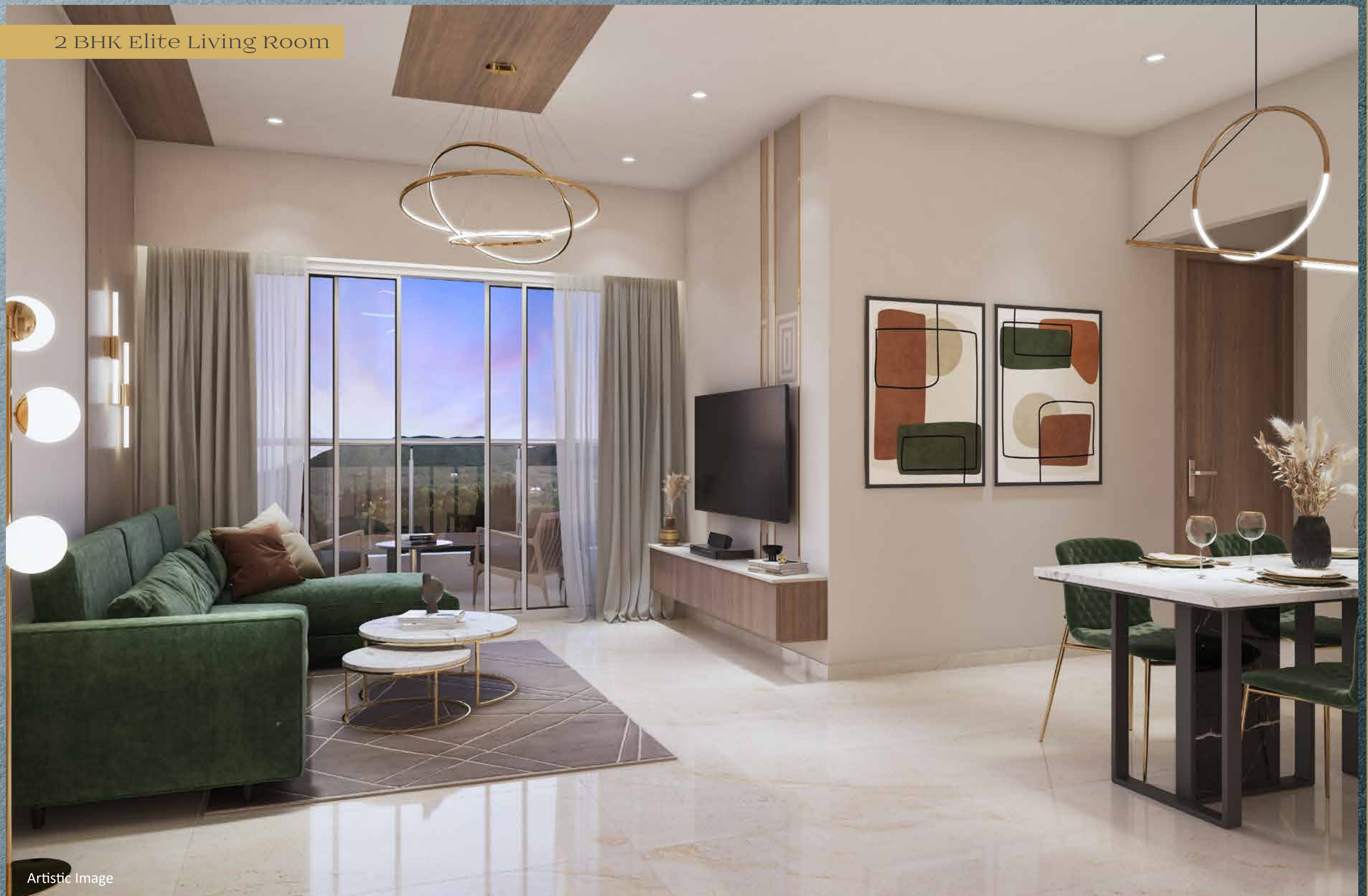
### 3 BHK Imperial Bathroom

Artistic Image





## 2 BHK Elite Living Room



Artistic Image



## 2 BHK Elite Kitchen



Artistic Image



## 2 BHK Elite Master Bedroom



Artistic Image





Site Address: Life Republic, Survey No. 74, Marunji, Hinjawadi - Marunji - Kasarsai Road, Taluka Mulshi, Pune - 411057.

Email: [sales@koltepatil.com](mailto:sales@koltepatil.com) | Visit: [liferepublic.in](http://liferepublic.in)

Disclaimer: All art renderings, illustrations, photographs and pictures contained in this brochure are an artist's impression only and the same should not be considered to be final image view of the final project. Since the project is under evaluation there is a possibility that there may be certain changes in the project as presented in this advertisement. Every interested purchaser should take note of this express representation. Kindly visit our website for the complete disclaimer. Kolte-Patil Planet Real Estate Private Limited is the promoter of the project. \*T & C Apply.